

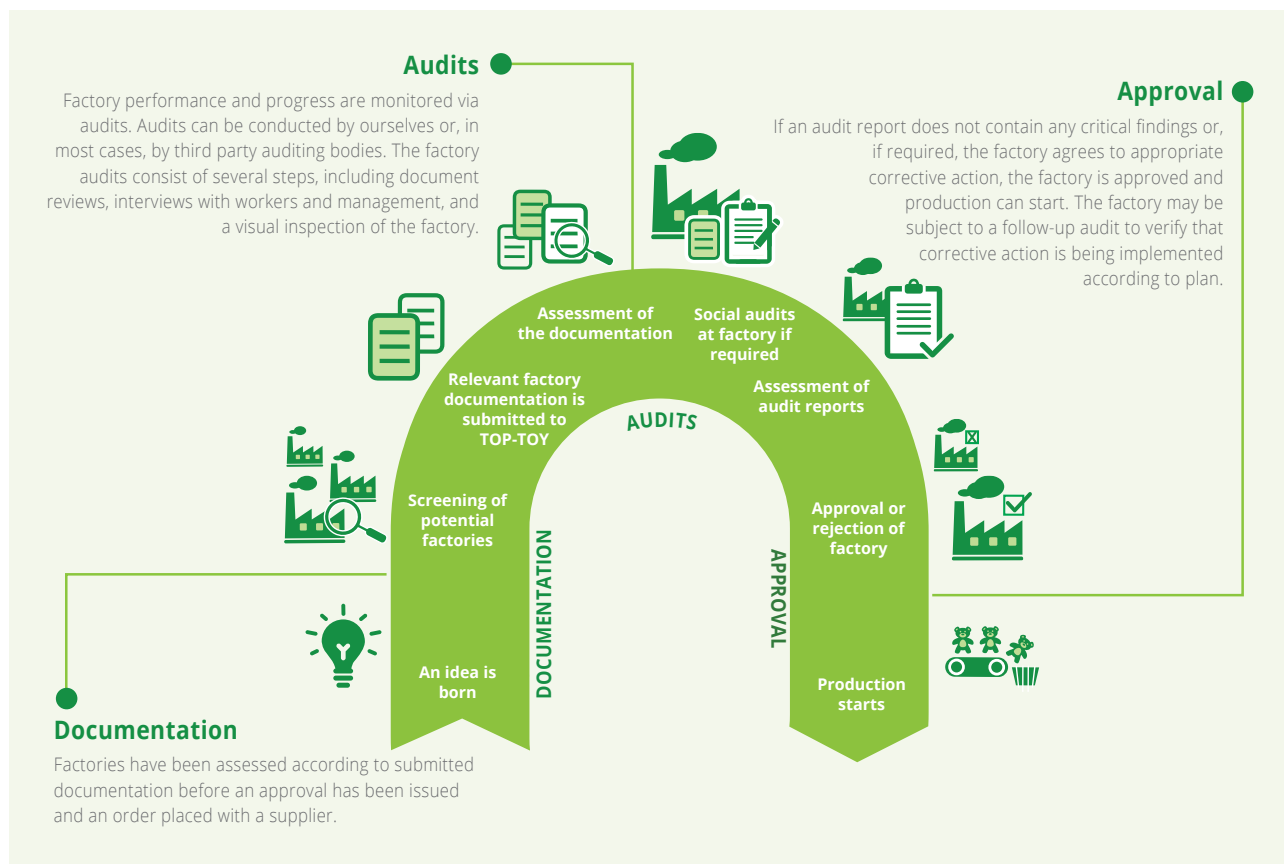
# SAFE AND RESPONSIBLE WORKING CONDITIONS

One of the preconditions for inspiring play @ every occasion is that we are confident the products we offer are made under responsible conditions.

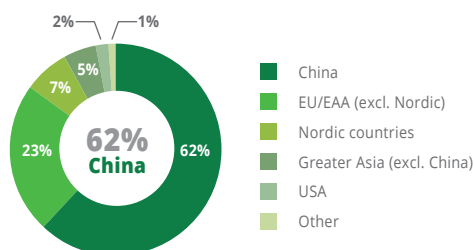
Through our social compliance programme, we work continuously to ensure our products are made under responsible conditions with respect for international human rights and labour standards. Our products are only produced in factories that have been audited in accordance with our social compliance standards.

We do not own any factories ourselves but collaborate with our suppliers to ensure the people who make our toys have safe, humane and healthy working conditions, where their rights are respected. As part of our human rights policy, we recognise our responsibility to pay attention to younger workers and migrant workers.

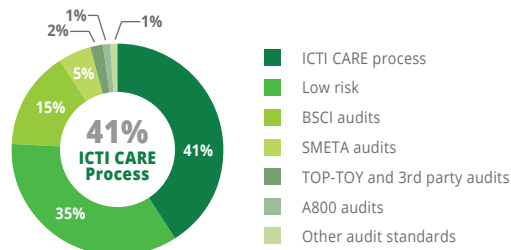
We monitor our suppliers' performance via social audits, where we screen factory working conditions. In 2016/2017, we screened around 1,000 factories<sup>1</sup>.



## Factory geographical distribution 2016/2017<sup>2</sup>



## Audit standards in percent 2016/2017<sup>2</sup>



1) This year we include screenings for actual and potential purchases. Last year we only included screenings for actual purchases.

2) The data covers the period from 1 July 2016 to 1 March 2017.